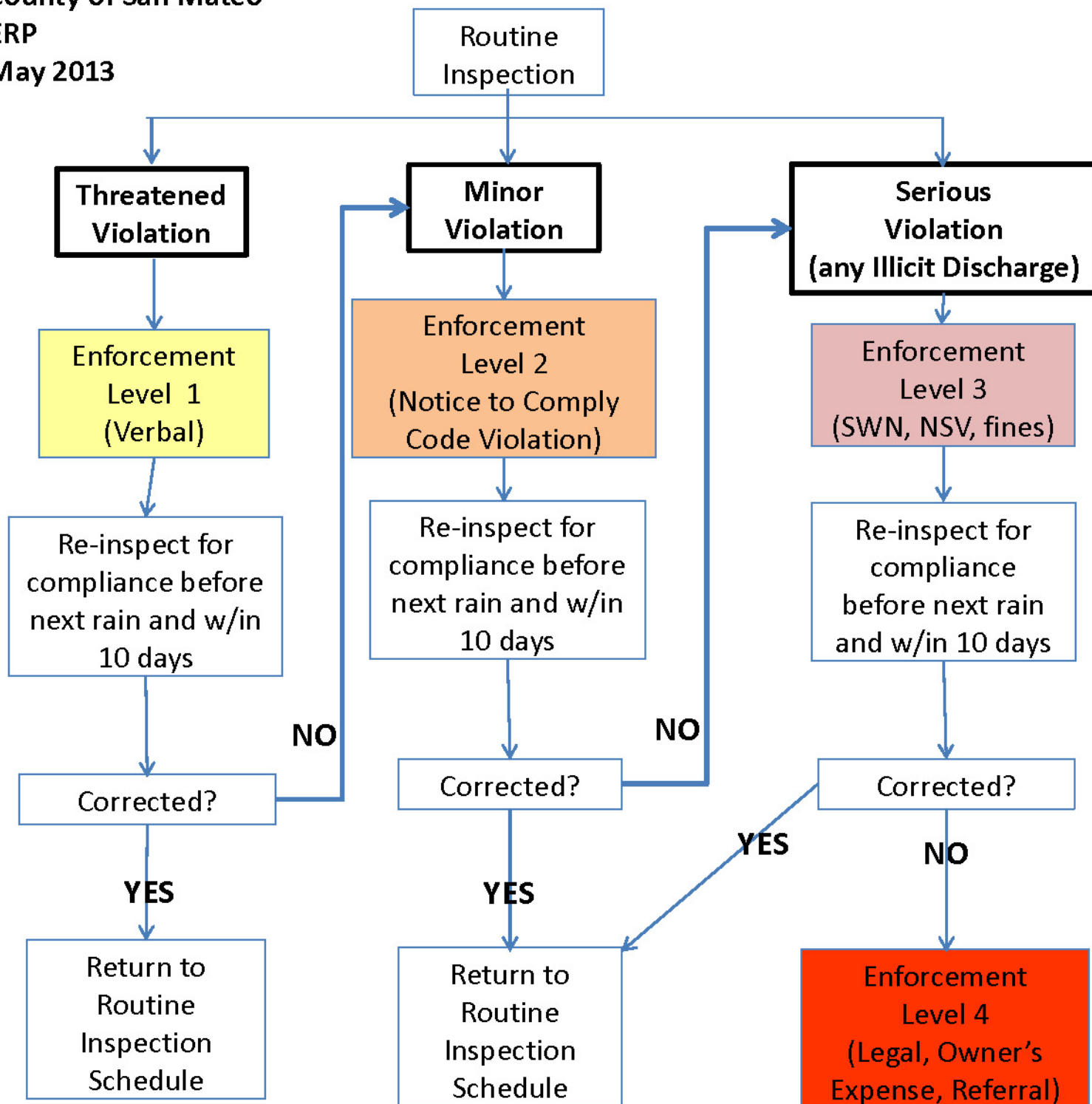


# Standard Enforcement Level Progression Flow Chart

County of San Mateo

ERP

May 2013



Notes: (1) Illicit discharge of pollutants, is where pollutants have the potential to enter or have entered a water body (e.g., streets, drainages, streams). (2) Enforcement action shall be escalated to the next enforcement level immediately following a failed follow-up inspection. (3) Inspectors shall follow the standard progression of enforcement as shown in this table, with the exception of Enforcement Level 4, which is authorized by the Enforcement Coordinator or Official. Reasons to use an enforcement level beyond the standard progression include magnitude/duration of the violation, effect of violation on receiving water, and compliance history and level good faith effort of the property owner. (4) For DPW projects, progression to Enforcement Level 4 is not applicable.