

San Mateo County

Off-leash Dog Pilot Program Data Summary: Monitoring Period 6 (July 2022 – August 2022)¹ *Pilot Program Data Collection*

Table 1. Overall Dog Monitoring Results at Quarry Park as measured for July 2022 and August 2022.

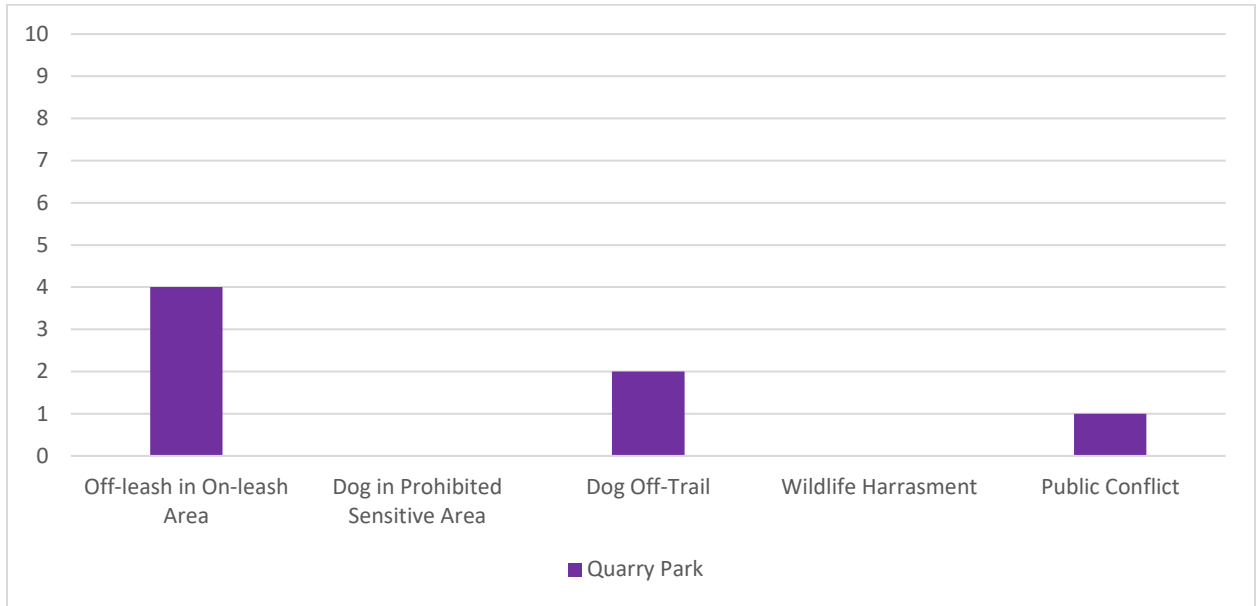
	Standards	Quarry Park
Presence of dog waste ²	No more than 20 occurrences in one month	8 instances per month
Harassment of wildlife	Dogs observed chasing or harassing wildlife two times over a 60-day period	0 instances
Dog entry to sensitive areas	No dogs observed entering Parks defined and signed sensitive areas	0 instances
Dogs traveling off-trail	Dogs observed traveling at 10 feet or more off trail	2 instances
Leash compliance for on-leash trails ³	70% of parties with dogs will have their dogs on a leash when using an on-leash trail	72.2% leash compliance
Interactions with dogs and visitors	Any dog is observed exhibiting unwelcome behavior(s) to other dogs or visitors 10 times per month	1 instance

¹ For Monitoring Period 6, there were two less survey days than in prior monitoring periods. This may be a contributing factor in instances where incident observations are lower than in previous reports.

² “Per month” data for this row was calculated by averaging the total observations for each month indicated in table 2.

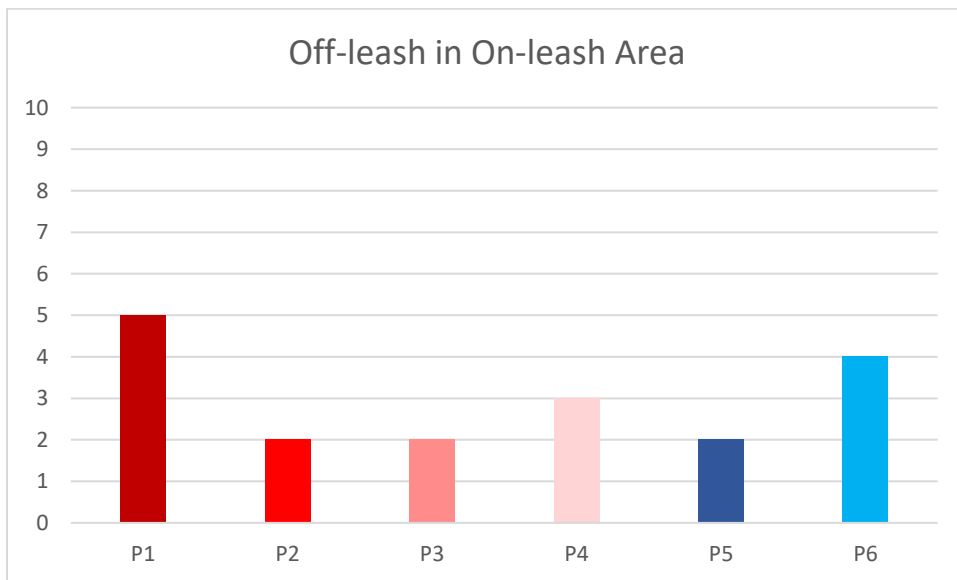
³ Leash compliance data was calculated as the average percentage of “on-leash dogs in on-leash trails” out of “all dogs in on-leash trails” for the monitoring period.

Graph 1. Dog Monitoring Results (excluding “Presence of Dog Waste”) at Quarry Park as measured for July 2022 and August 2022.



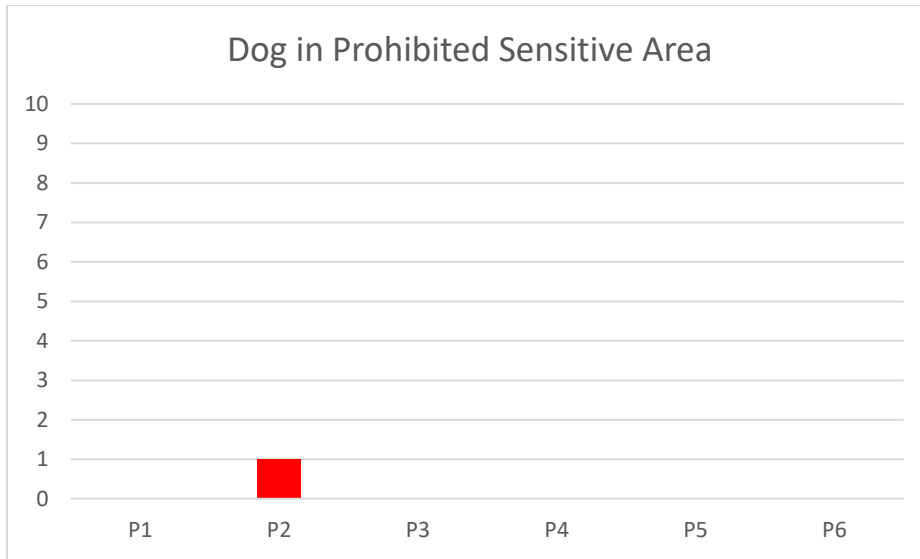
Graphs 2a-e. Change in Dog Monitoring Results⁴ at Quarry Park throughout all monitoring periods.

2a.

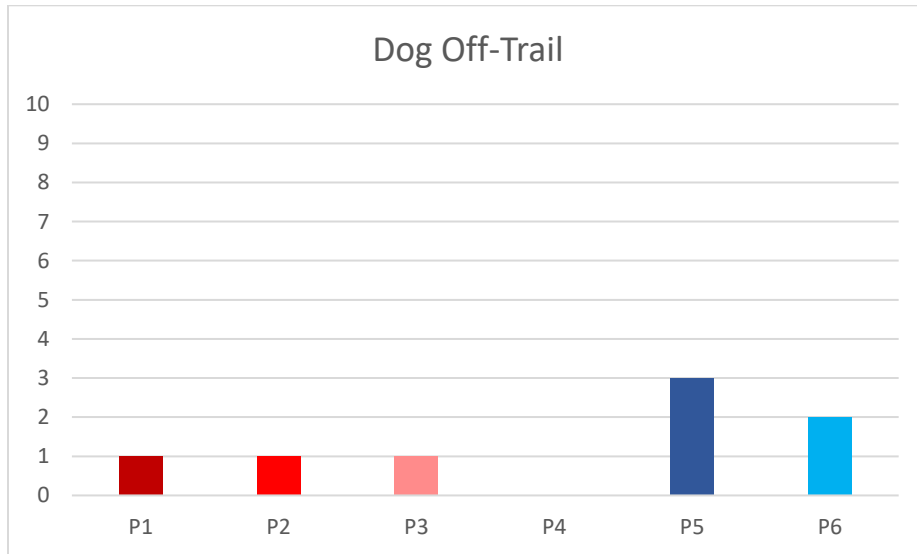


⁴ “Wildlife harassment” has been excluded, due to there being no observed instances for any of the monitoring periods.

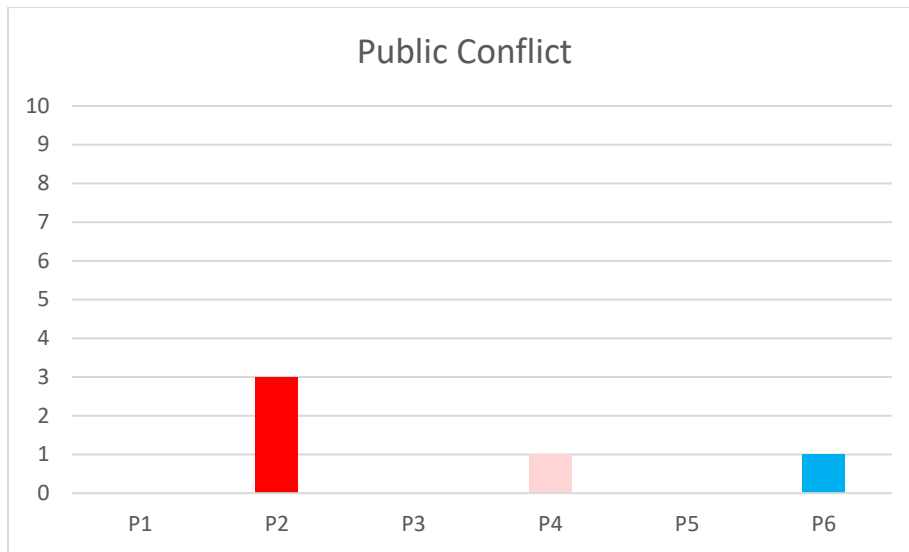
2b.



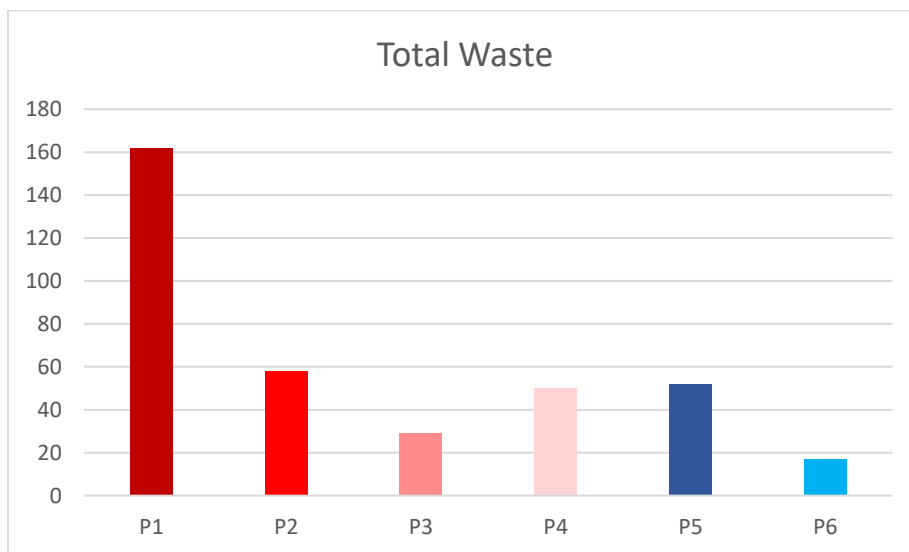
2c.



2d.



2e.⁵



⁵ There are various external factors that may have contributed to the total waste for P1 being so much higher than following monitoring periods: for instance, waste from prior weeks or months being accounted for in initial observations, observer calibration in discerning between new and old observations, and the introduction of waste cleanup events that occurred in conjunction with monitoring.

Table 2. Monthly Dog Monitoring Results for “Presence of Dog Waste” and “Interactions with Dogs and Visitors” at Quarry Park as measured for July 2022 and August 2022.

		July	August	Total
Quarry Park	Presence of Dog Waste	8 instances	9 instances	17 instances
	Interactions with Dogs and Visitors	1 instance	0 instances	1 instance

Graph 3. Dog Waste Comparison at Quarry Park as measured for July 2022 and August 2022.

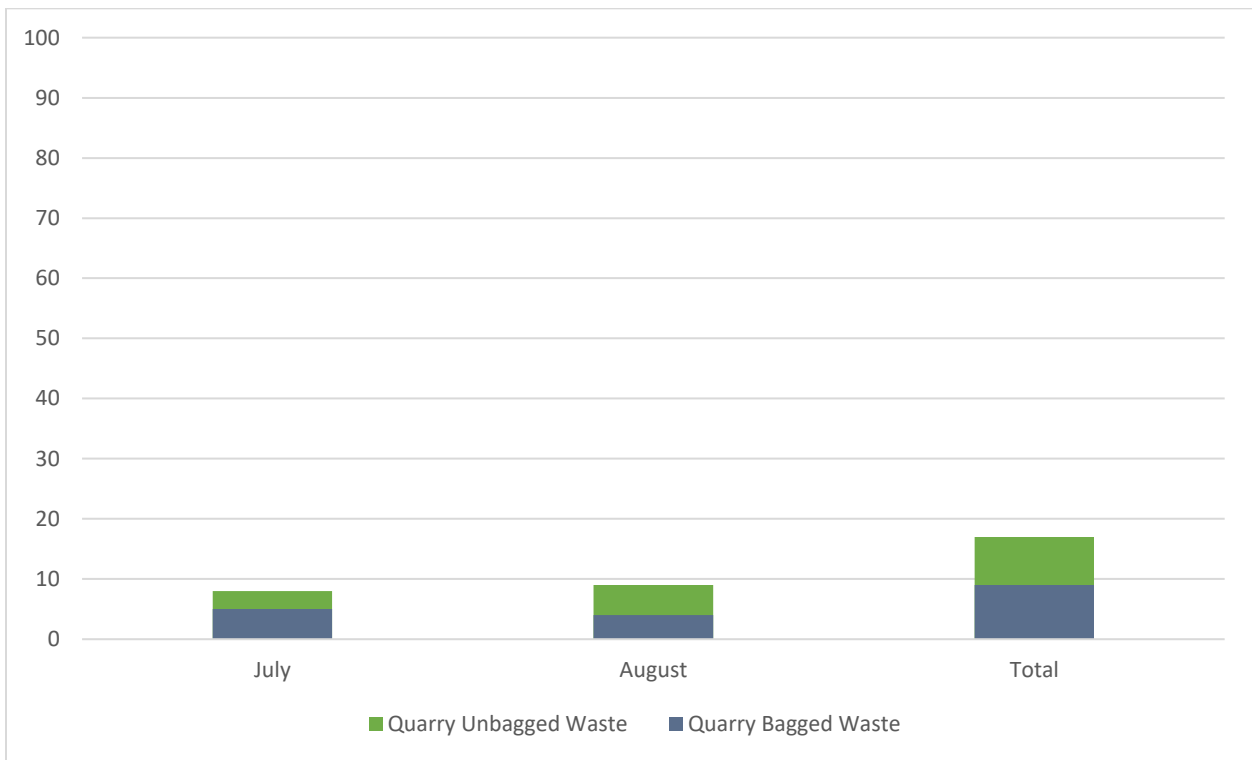


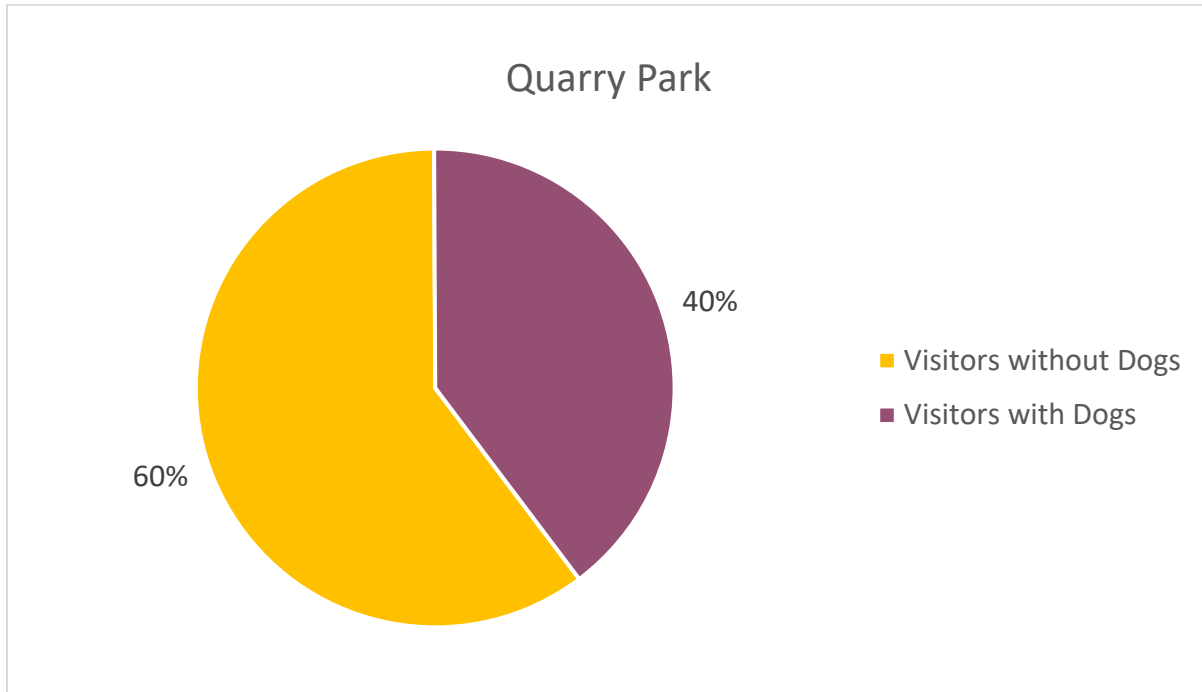
Table 2. Visitor Demographics at Quarry Park as measured for July 2022 and August 2022.

	Quarry Park	
Total visitors overall	392	
	Total	% of visitors overall
Visitors without dogs	236	60.2%
Visitors with dogs	156	39.8%

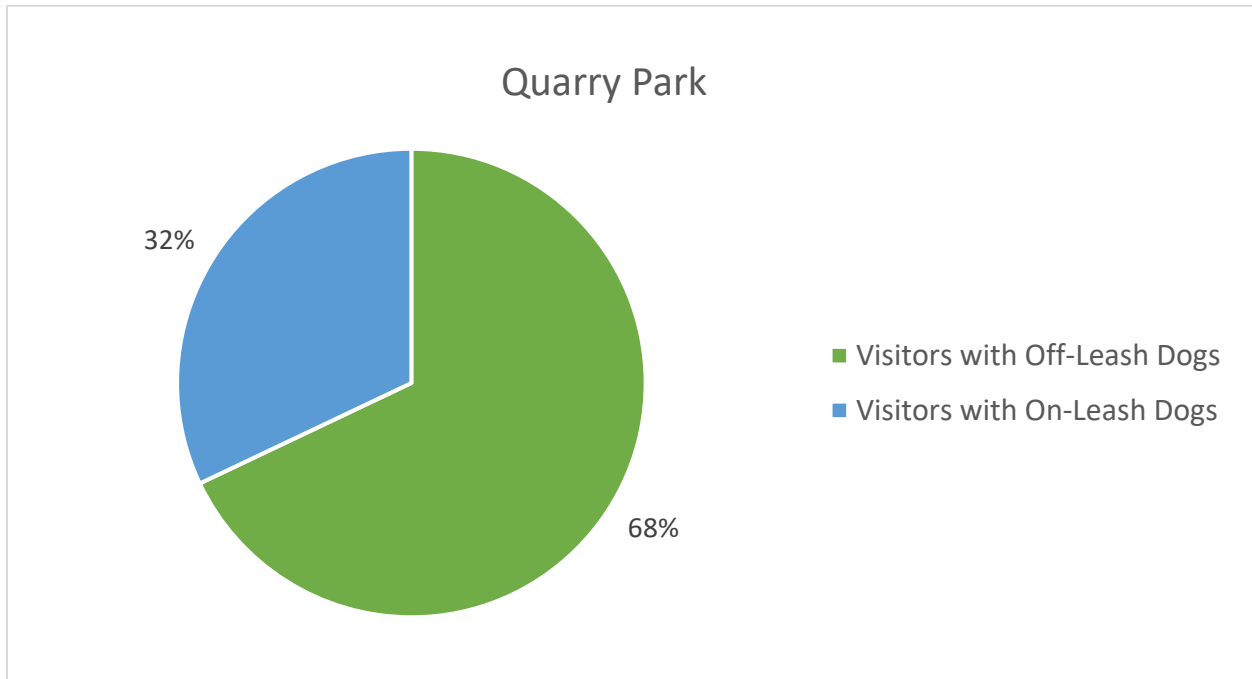
Table 3. Demographics of Visitors with Dogs at Quarry Park as measured for July 2022 and August 2022.

	Quarry Park	
Total visitors with dogs	156	
	Total	% of visitors with dogs
Visitors with off-leash dogs	106	67.9%
Visitors with on-leash dogs	50	32.1%

Graph 4. Percentage of Visitors with or without Dogs out of Total Visitors at Quarry Park as measured for July 2022 and August 2022.

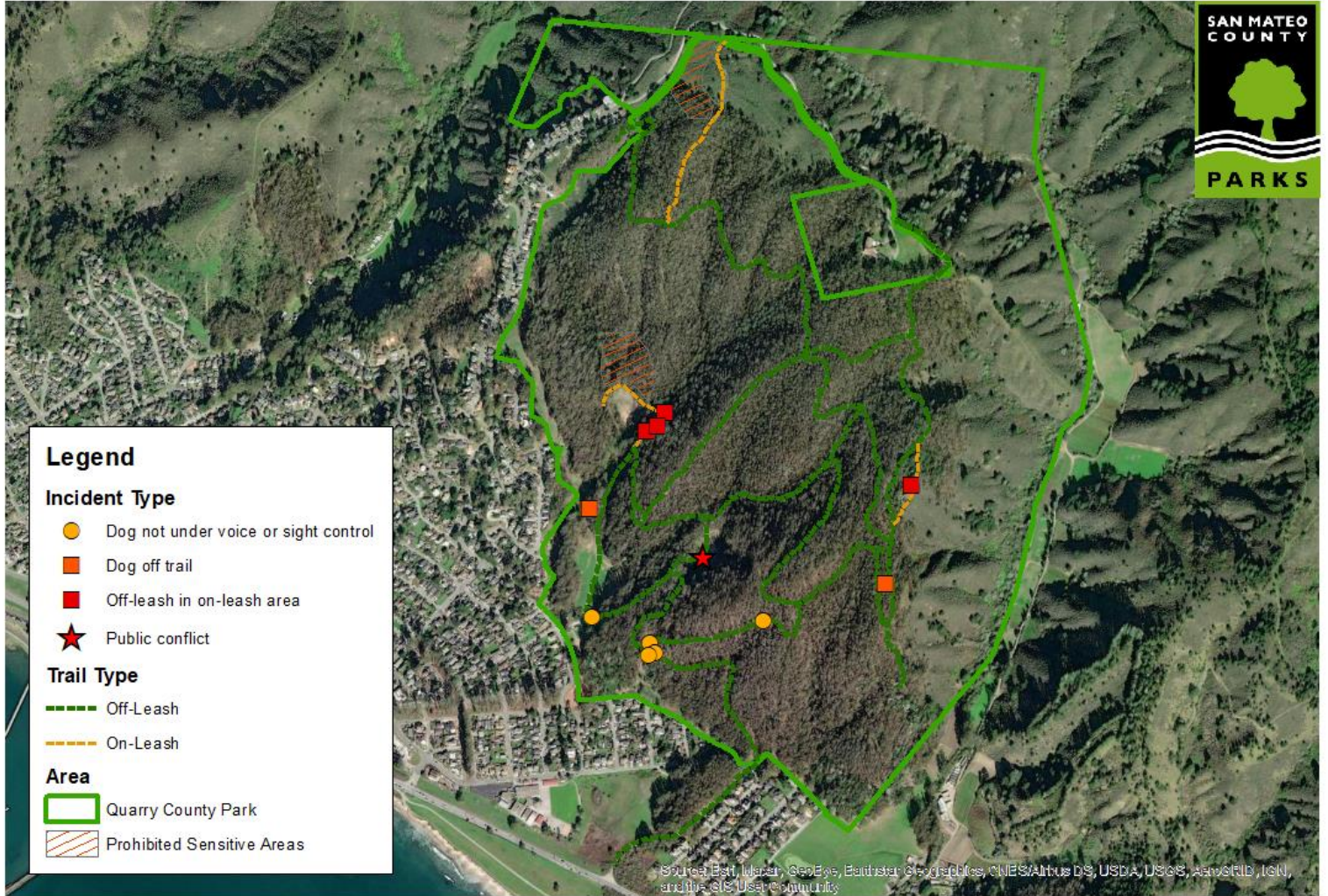


Graph 5. Percentage of Visitors with Off-Leash or On-Leash Dogs out of Visitors with Dogs at Quarry Park as measured for July 2022 and August 2022.



I. Maps

Map 1. Dog Monitoring Criteria (excluding “Presence of Dog Waste”) at Quarry Park as measured for July 2022 and August 2022.

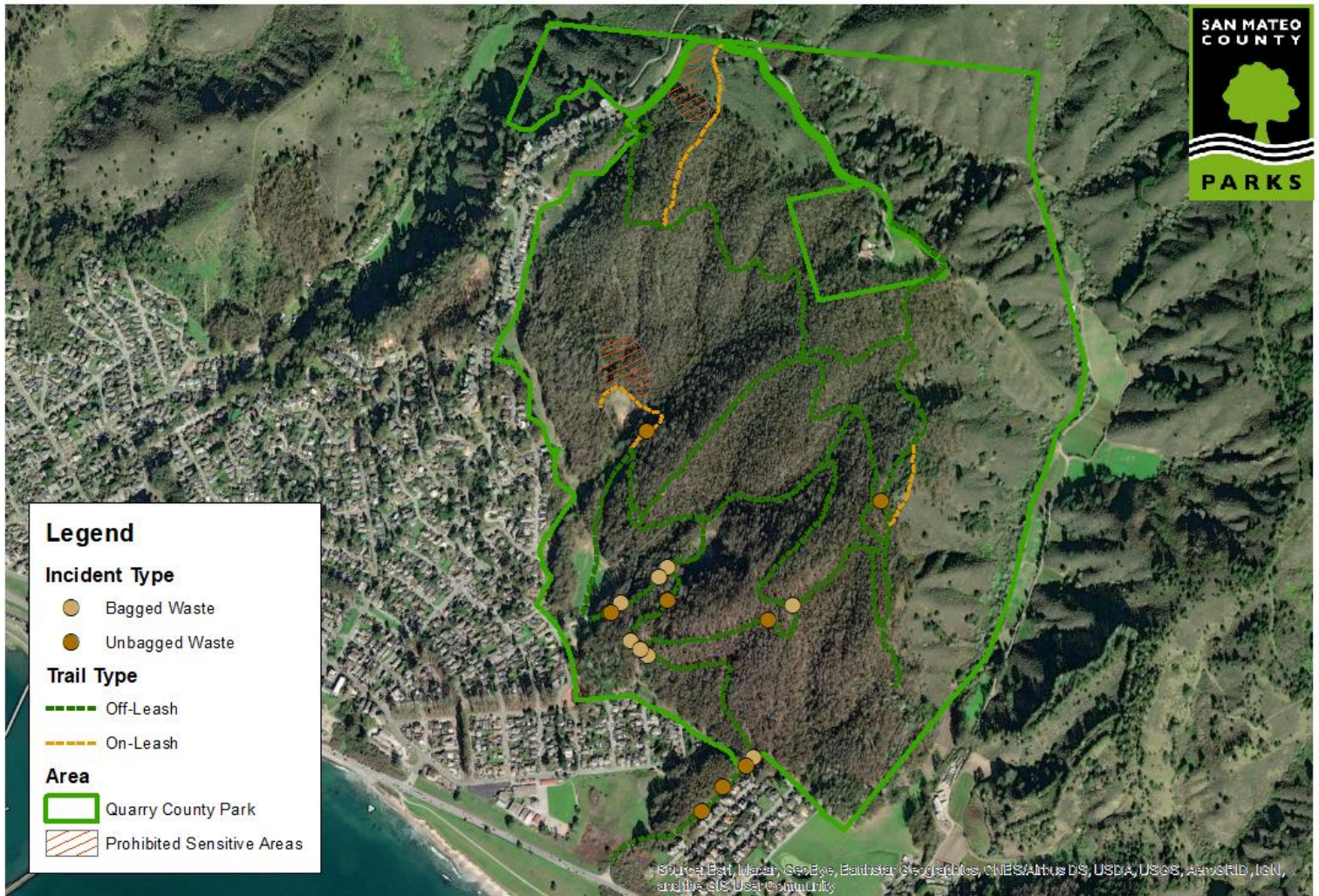


Dog Recreation Incidents: Quarry Park

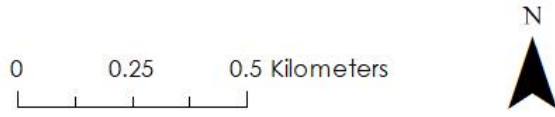
0 0.25 0.5 Kilometers



Map 2. Dog Waste Observations at Quarry Park as measured for July 2022 and August 2022.



**Dog Recreation Incidents:
Quarry Park**



II. Summary of Results

Overall, dog walkers did not exceed any criteria standards during Monitoring Period 6. Comparison to Monitoring Period 5 reveals that leash compliance decreased from 75% to 72.2%, and instances of dogs traveling off-trail decreased from three instances to two instances. Harassment of wildlife and entry into prohibited sensitive areas both remained at zero, while public conflicts increased from no instances to one instance.

In terms of visitor demographics, Quarry Park had 392 total observed visitors for Monitoring Period 6, with 39.8% of its total visitors bringing dogs and 60.2% visiting

without dogs. Additionally, 67.9% of visitors with dogs at Quarry Park let their dogs off-leash, while 32.1% kept them on-leash. Compared to Monitoring Period 5, there was a decrease in overall visitors from 509 to 392. There was a decrease in both the number of visitors without dogs and the number of visitors with dogs, with the former going from 293 to 236 and the latter from 216 to 156. In comparison to the previous monitoring period, the proportion of visitors without dogs to visitors with dogs shifted to being more in favor of visitors without dogs, from 57.6% of all visitors to 60.2%. There was also a decrease in both visitors with off-leash dogs and visitors with on-leash dogs, and the ratio between the two shifted from 61.1% off-leash and 38.9% on-leash in Monitoring Period 5 to 67.9% off-leash and 32.1% on-leash in Monitoring Period 6, indicating a greater proportion of off-leash dog usage than before.

III. Courses of Action

Following the results of Monitoring Period 5, and in accordance with the Off-leash Dog Recreation Pilot Program's IS/MND, the Department has posted the following sign in Quarry Park:

"Off-leash dog recreation is being piloted at Quarry Park. The Department is monitoring 8 criteria, including presence of dog waste. The amount of dog waste being left on trails exceeds the pilot standard.

For success of this pilot program, dog waste must be picked up, bagged, and disposed of in a trash can.

See more about the Quarry Park Dog Recreation Program at (URL and insert QR Code)."